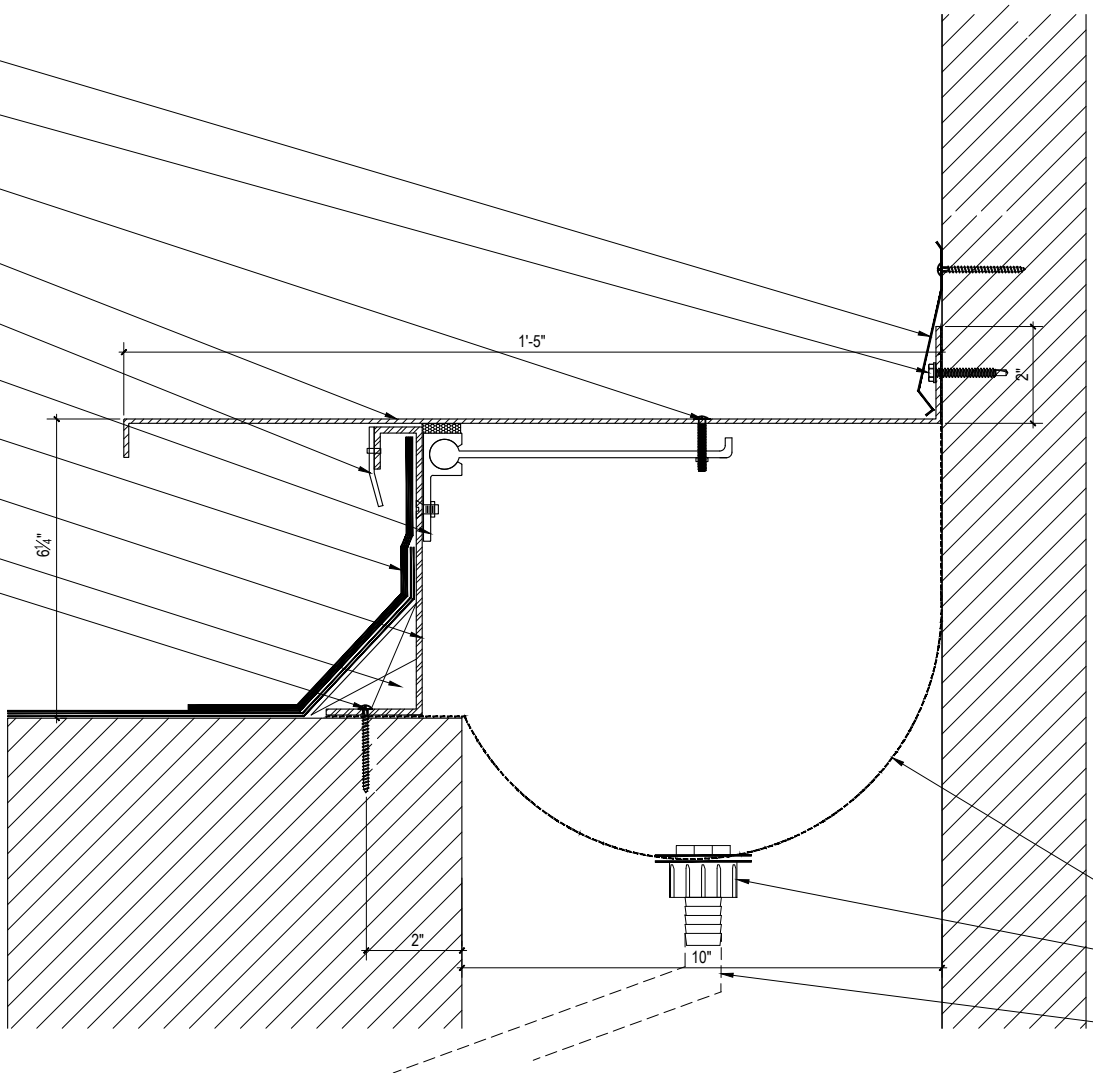


- S.M. FLASHING, BY OTHERS
- SEALANT SCREW w/ WASHER @ 20" O.C. MAX, BY INSTALLER
- MHP S.S. FASTENERS w/ S.S. BONDED NEOPRENE WASHER AND S.S. CENTERING BARS @ 20" O.C.
- 0.125" ALUM. COVER PLATE. MILL FINISH (5052-H32)
- CLOSURE CAP
- CONT. ALUM. EXTRUSION
- ROOF MEMBRANE
- ALUM. BASE FRAME
- CANT STRIP BY OTHERS
- SEALED 1 1/2" FASTENERS @ 20" O.C. MAX BY INSTALLER



- CONT. MHP VAPOR BARRIER
- DRAIN TUBE CONNECTION, BY M.H.P. *OPTIONAL
- DRAIN TUBE, BY OTHERS



M.H. POWELL & CO., INC.
ARCHITECTURAL SEISMIC EXPANSION JOINT SYSTEMS

2313 YATES AVENUE | PHONE : (323) 887-0037
 COMMERCE, CA 90040 | FAX : (323) 887-0877
 WEB : www.mhpowell.net

**MODEL
CRW-10**

ROOF TO WALL

PROJECT : _____ PROJECT # : _____
 LOCATION : _____ DATE : _____
 ARCHITECT : _____
 CUSTOMER : _____